

Monday, October 21, 2019

- Complete warm-up.
- Collect logo and/or paper for painting project.

The Great Wave, Katsushika Hokusai, c.1830, woodblock print. From the series, Thirty-six Views of Mt. Fuji



Warm-up: Answer the following in 2-3 complete sentences.

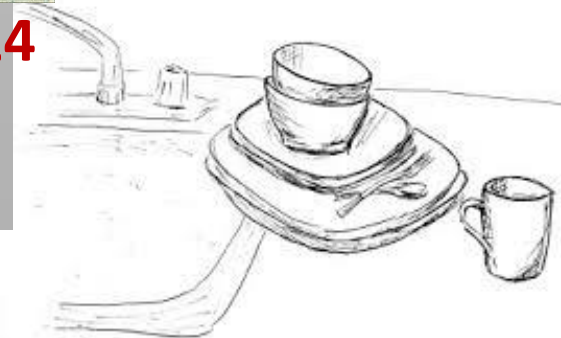
This is a 2D work. What did Hokusai do to suggest the ILLUSION of SPACE?

Today, we will:

- Work on Pop Art Logo Painting

SB2: Dirty Dishes DUE 10/23 or 24

1. Draw a minimum of 5 dirty dishes (they do not have to be stacked)
2. Consider their location: in the sink, on a table, on a counter
3. Be sure your drawing meets all requirements: labeled, fills the page, shaded or colored, and shows effort.



Tuesday, October 22, 2019

- Complete warm-up.
- Collect logo and/or paper for painting project.

The Great Wave, Katsushika Hokusai, c.1830, woodblock print. From the series, Thirty-six Views of Mt. Fuji



Warm-up: Answer the following in 2-3 complete sentences.

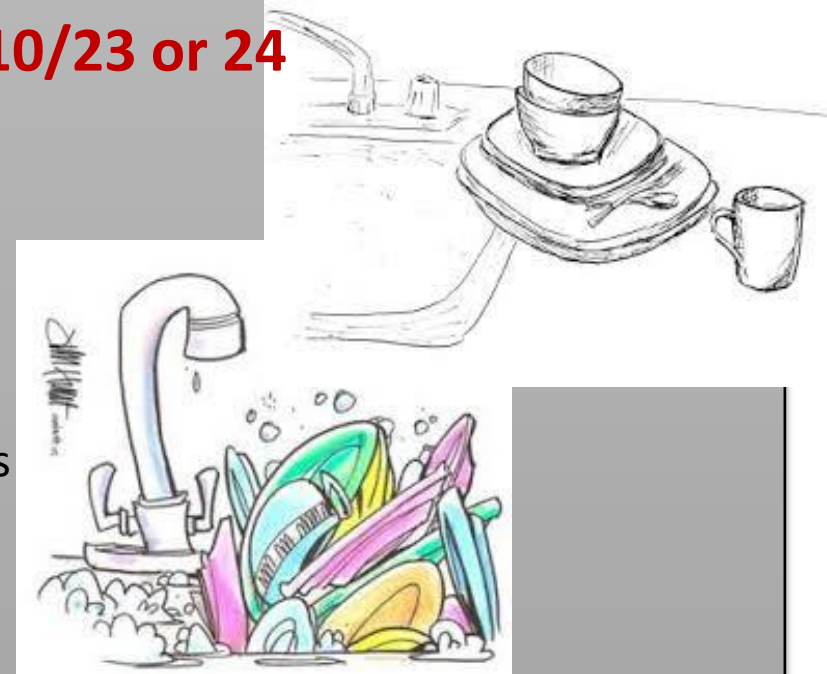
Does this logo work for our project? Why or why not? Draw a “fix” on your warm-up sheet.

Today, we will:

- Work on Pop Art Logo Painting

SB2: Dirty Dishes DUE 10/23 or 24

1. Draw a minimum of 5 dirty dishes (they do not have to be stacked)
2. Consider their location: in the sink, on a table, on a counter
3. Be sure your drawing meets all requirements: labeled, fills the page, shaded or colored, and shows effort.



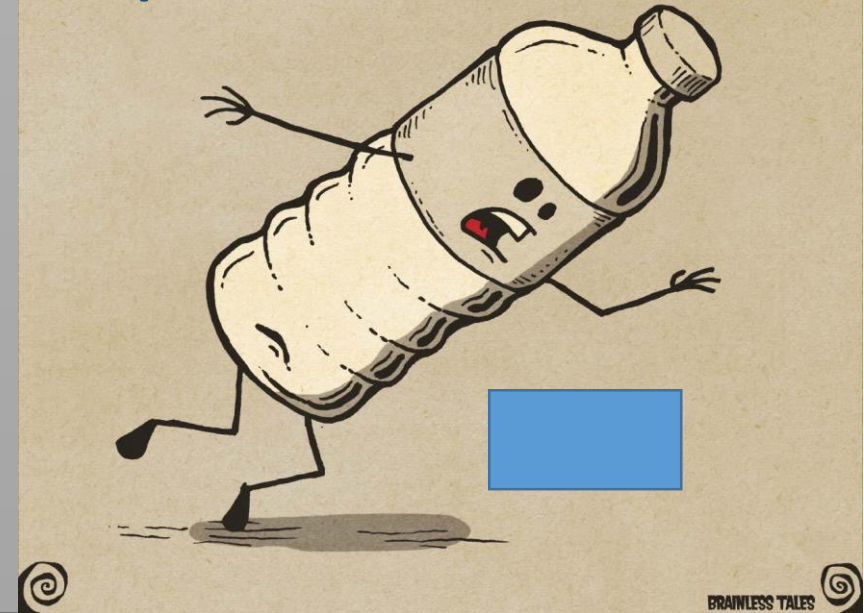
Wed., October 23, 2019

- Turn in sketchbook to crate on front table.
- Collect your project.

Today, we will:

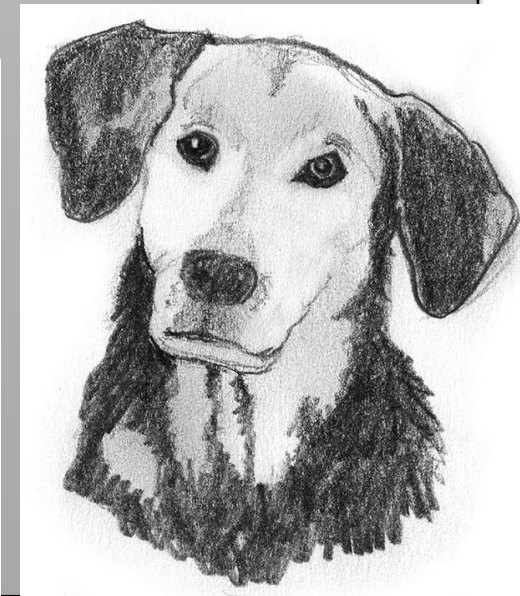
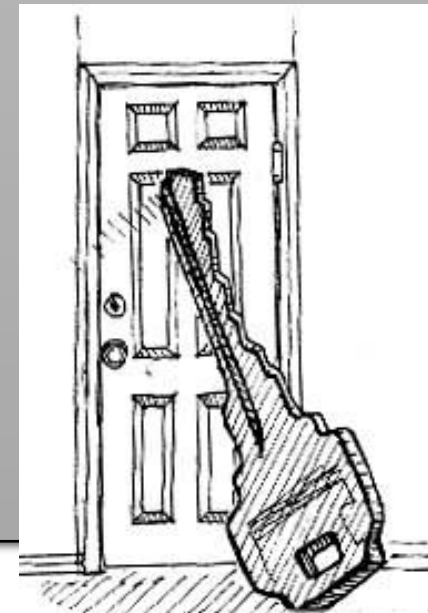
- Work on Pop Art Logo Painting

Can you solve these visual puns?



SB3 and SB4: DUE 10/30 or 31

- 3: Size distortion
- 4: Free Sketch
 - Label with SB#, date
 - Fill the page
 - Shade/color
 - Show evidence of effort (each sketch should take a minimum of 30 minutes)



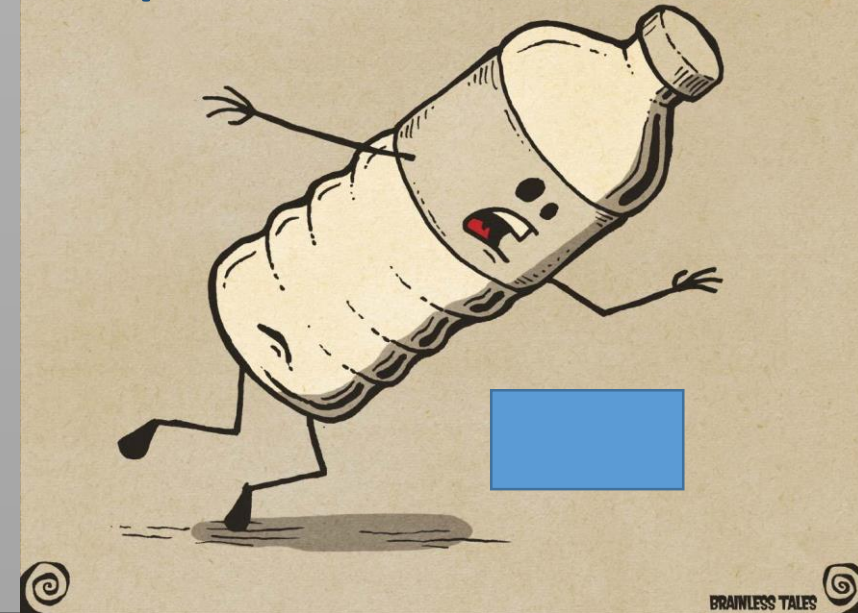
Thurs., October 24, 2019

- Turn in sketchbook to crate on front table.
- Clear table.

Today, we will:

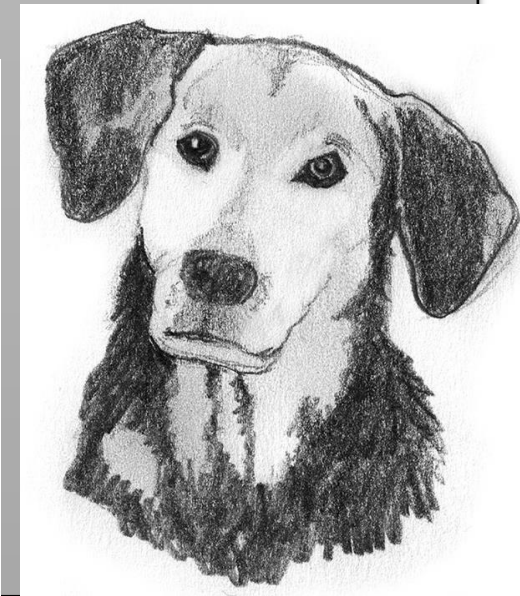
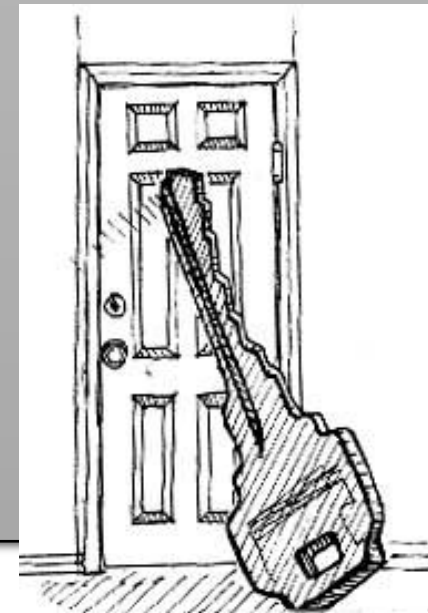
- Paint dinosaurs and eggs

Can you solve these visual puns?



SB3 and SB4: DUE 10/30 or 31

- 3: Size distortion
- 4: Free Sketch
 - Label with SB#, date
 - Fill the page
 - Shade/color
 - Show evidence of effort (each sketch should take a minimum of 30 minutes)

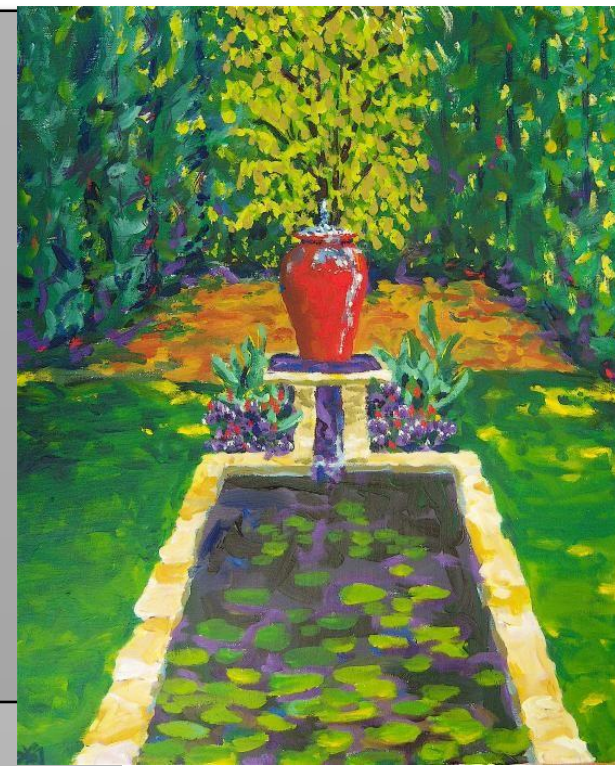


Friday, October 25, 2019

- Collect sketchbook from front table.
- Complete warm-up.
- Collect project.

Warm-up: Answer the following in 2-3 complete sentences.

1. What is **BALANCE** in an artwork?
2. What are the three kinds of balance?
3. Which type does this watercolor have?



Today, we will:

- Work on Pop Art Logo Painting

SB3 and SB4: DUE 10/30 or 31

- 3: Size distortion
 - 4: Free Sketch
- Label with SB#, date
 - Fill the page
 - Shade/color
 - Show evidence of effort (each sketch should take a minimum of 30 minutes)

